

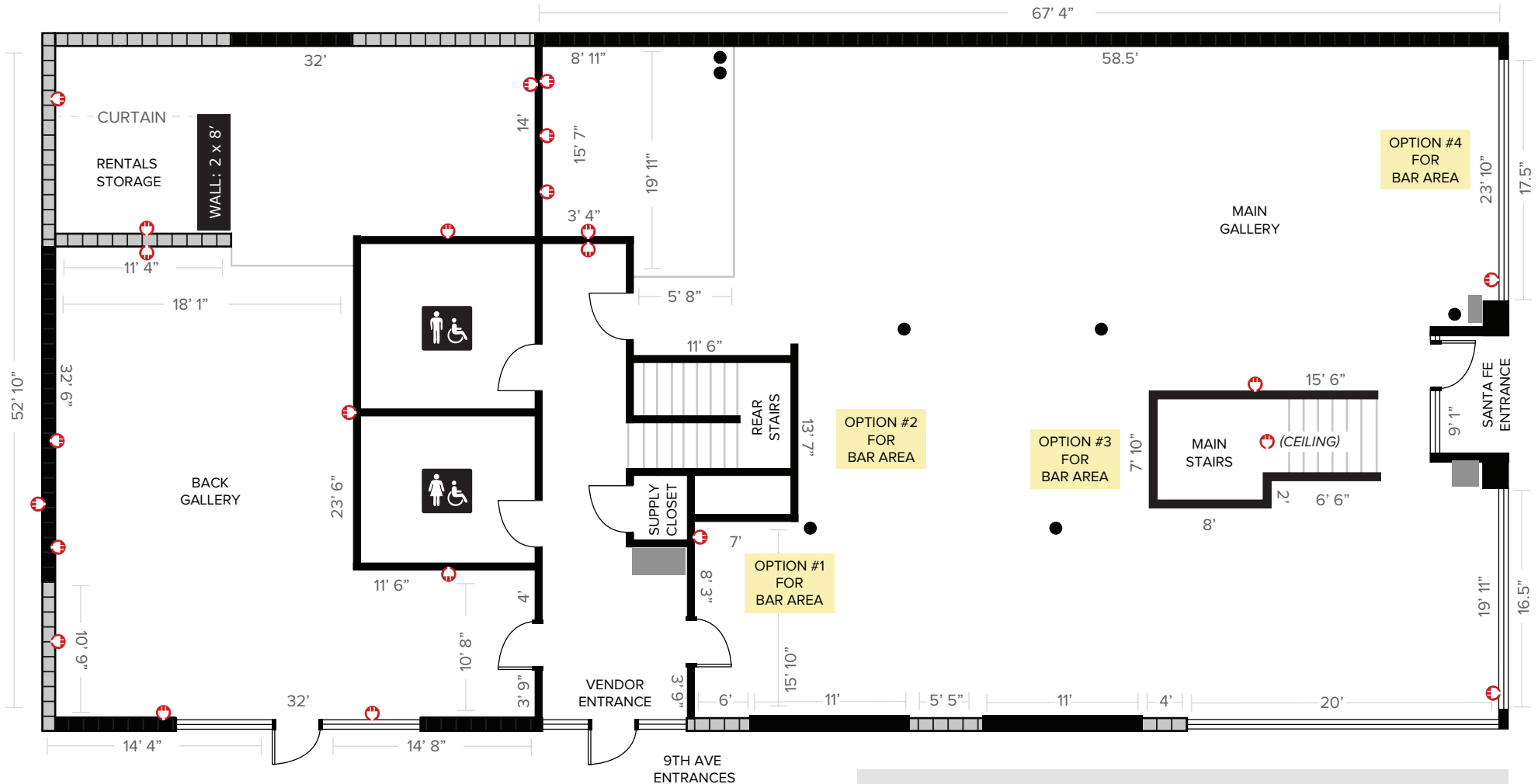
# ARTWORK NETWORK

## MAIN & BACK GALLERY FLOORPLAN

EVENT NAME:

DATE OF EVENT:

NOTES:



- (NOTE: CAN NOT BE MOVED)**  
CABINET (HALL): 17" x 44"
- (NOTE: MOVEABLE)**  
PEDESTAL (MAIN GALLERY): 2 x 2'
- (NOTE: CAN NOT BE MOVED)**  
FILE CABINET (MAIN GALLERY): 2 x 1.25'

- 5-7" PIPES/POLES
- ELECTRICAL OUTLET
- BRICK WALL
- WINDOW



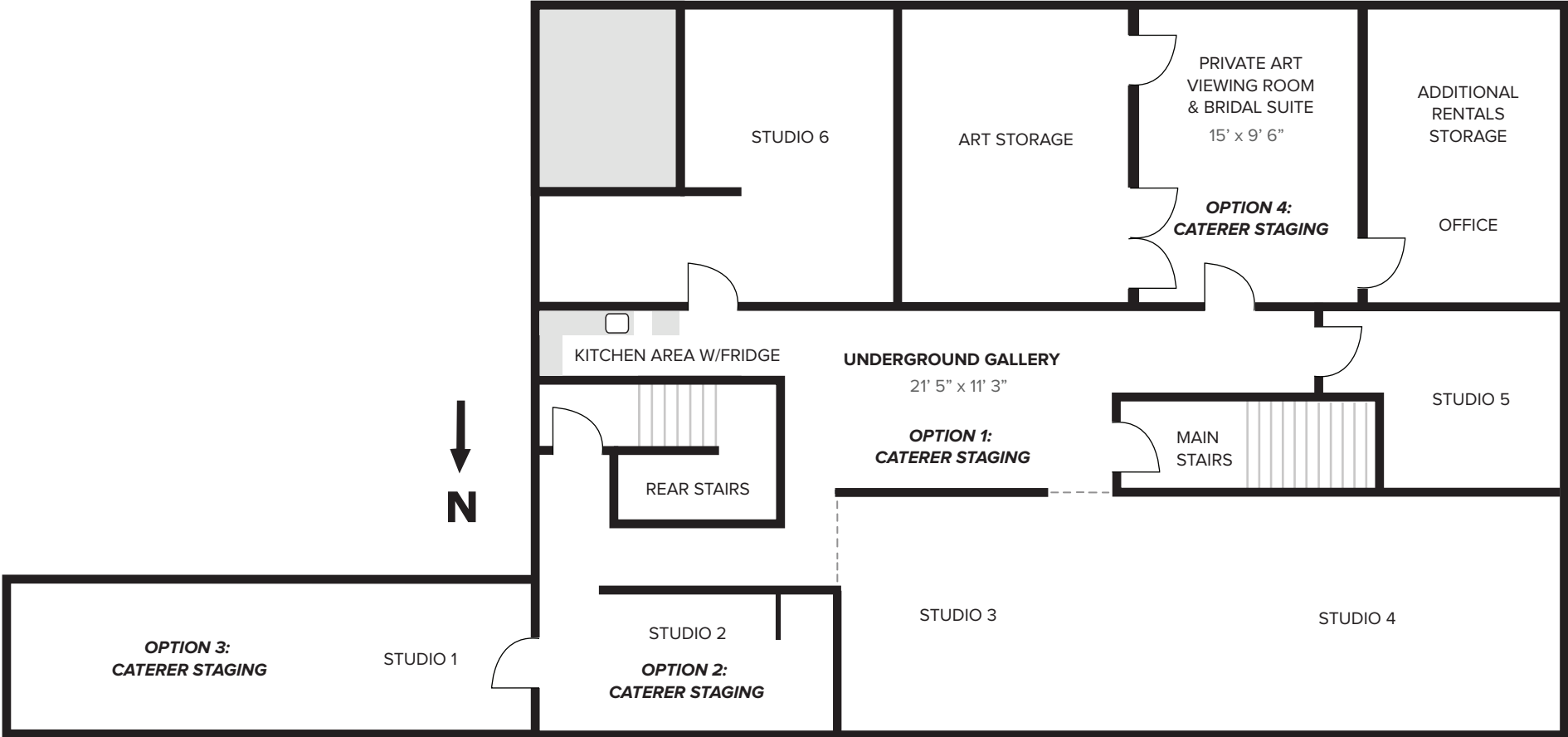
**Please include ALL of the following items on your finished floorplan (even if they will not be in use):**

*Note: Many events place the moveable walls in the front windows for an open feel which will still let in plenty of natural light.*

WALL: 2 x 9.5'	BAR: 2 x 6'	#1	#2	#3	#4
WALL: 2 x 8'	BENCH: 3 x 6.5'	STEEL TABLES			
WALL: 2 x 8'	BENCH: 3 x 6.5'	1: W: 40" X L: 77" X H: 32"			
		2: W: 44" X L: 44" X H: 35"			
		3: W: 44" X L: 44" X H: 35"			
		4: W: 39" X L: 50" X H: 37"			

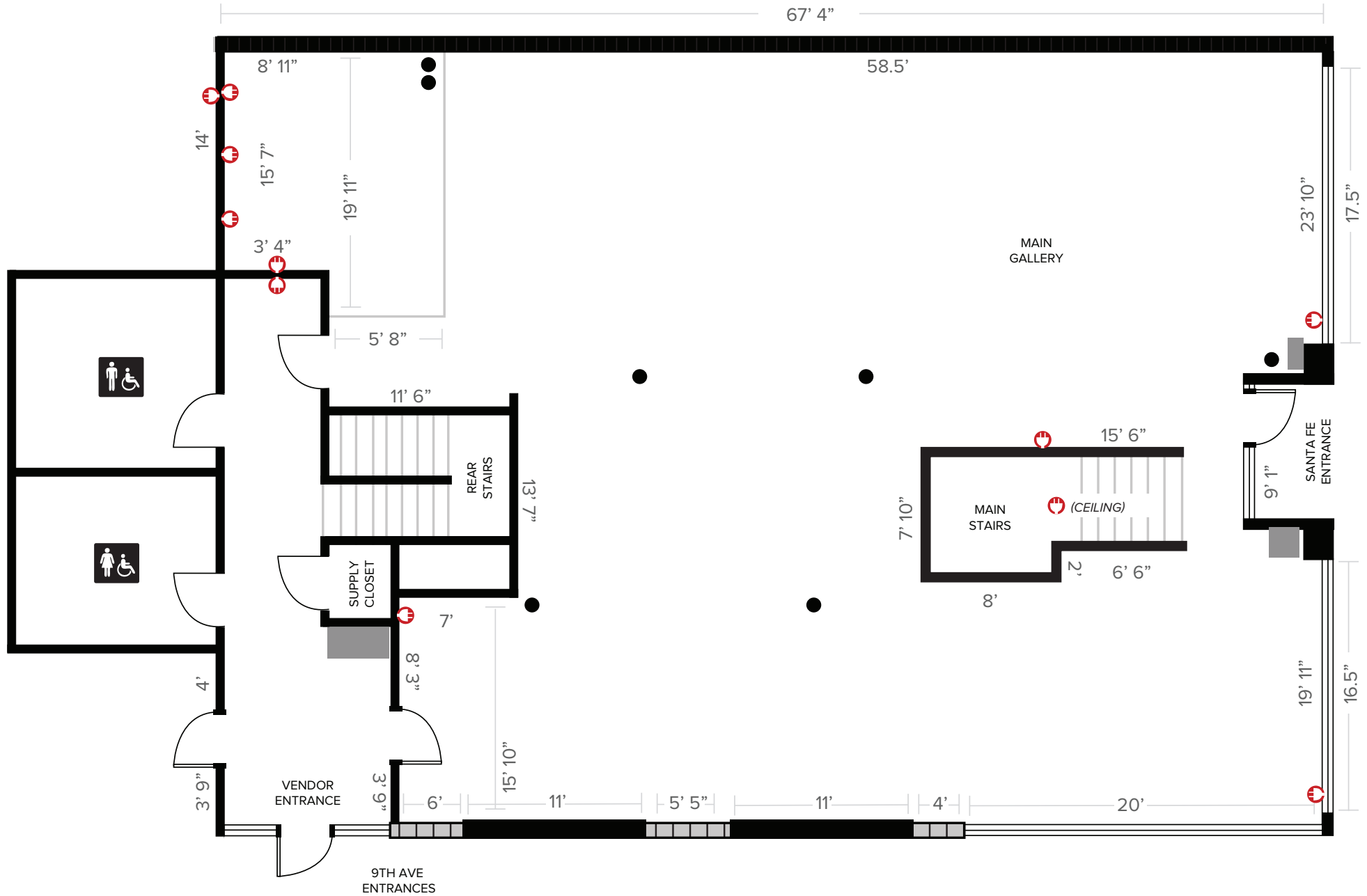
# ARTWORK NETWORK

## UNDERGROUND GALLERY AND STUDIOS FLOORPLAN



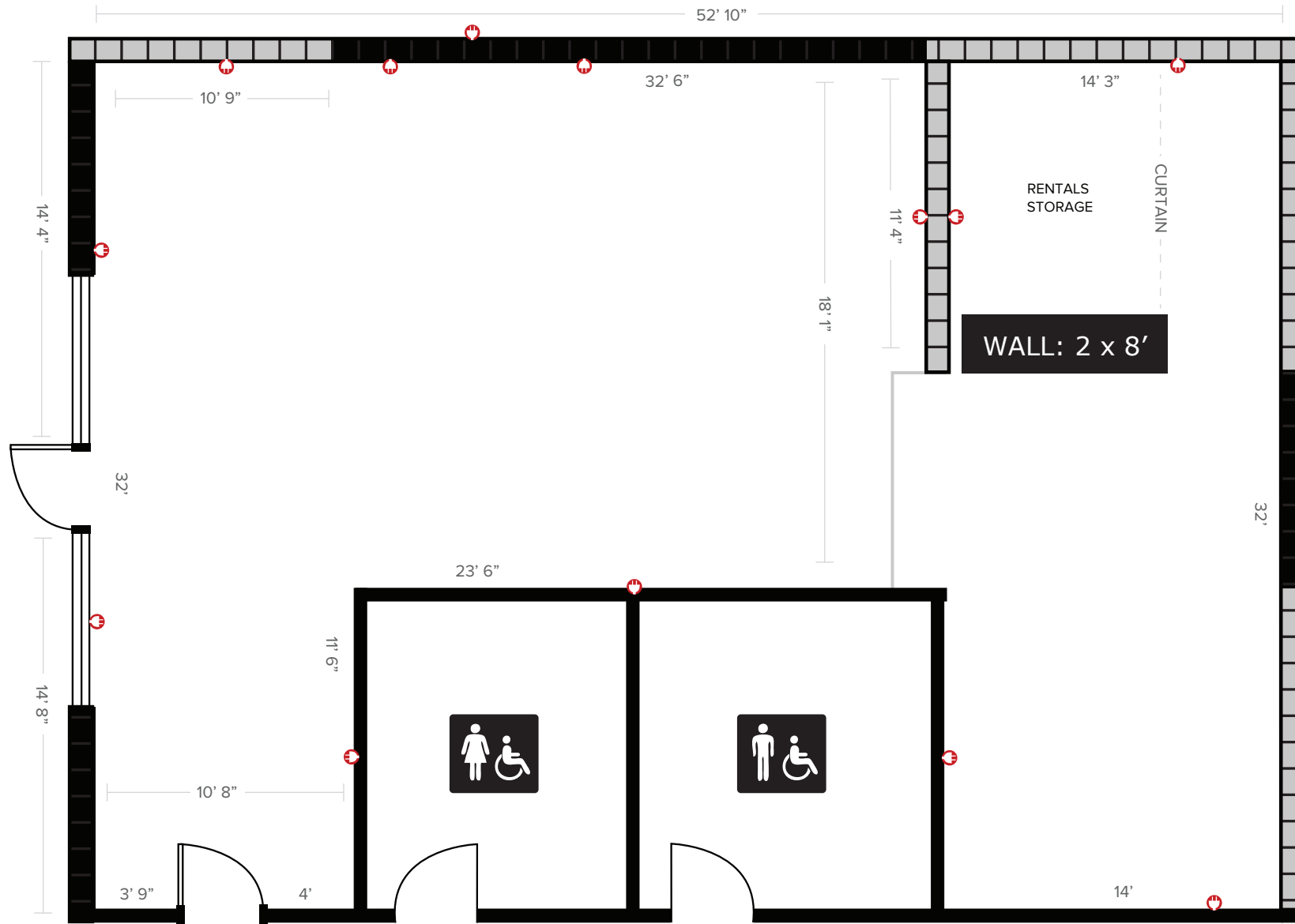
# ARTWORK NETWORK

## MAIN GALLERY FLOORPLAN



# ARTWORK NETWORK

## BACK GALLERY FLOORPLAN



# ARTWORK NETWORK

## WINDOW MEASUREMENTS

**LEFT FRONT WINDOW**

h: 26.5" x w: 65"	h: 26.5" x w: 65"	h: 26.5" x w: 65"
h: 26.5" x w: 65"	h: 26.5" x w: 65"	h: 26.5" x w: 65"
h: 46" x w: 65"	h: 46" x w: 65"	h: 46" x w: 65"

**FRONT ENTRANCE**

h: 26" x w: 34.25"	h: 26.5" x w: 56"
h: 26" x w: 34.25"	h: 26.5" x w: 56"
<b>DOOR</b> h: 69" x w: 30"	h: 46" x w: 56"

**RIGHT FRONT WINDOW**

h: 26.5" x w: 65"	h: 26.5" x w: 65"	h: 26.5" x w: 65"
h: 26.5" x w: 65"	h: 26.5" x w: 65"	h: 26.5" x w: 65"
h: 46" x w: 65"	h: 46" x w: 65"	h: 46" x w: 65"

**SIDE FRONT WINDOW**

h: 26.5" x w: 77"	h: 26.5" x w: 77"	h: 26.5" x w: 77"
h: 26.5" x w: 77"	h: 26.5" x w: 77"	h: 26.5" x w: 77"
h: 46" x w: 77"	h: 46" x w: 77"	h: 46" x w: 77"

**MIDDLE ENTRANCE**

h: 27.5" x w: 34.5"	h: 27.5" x w: 34.5"	h: 27.5" x w: 34.5"
h: 46" x w: 34.5"	<b>DOOR</b> h: 69" x w: 30"	h: 46" x w: 34.5"

**BACK ENTRANCE**

h: 26.5" x w: 40"	h: 26" x w: 34.25"	h: 26.5" x w: 40"
h: 46" x w: 40"	<b>DOOR</b> h: 68.5" x w: 29.75"	h: 46" x w: 34.5"

**NOTE: WINDOWPANE DIVIDERS ARE 2"**